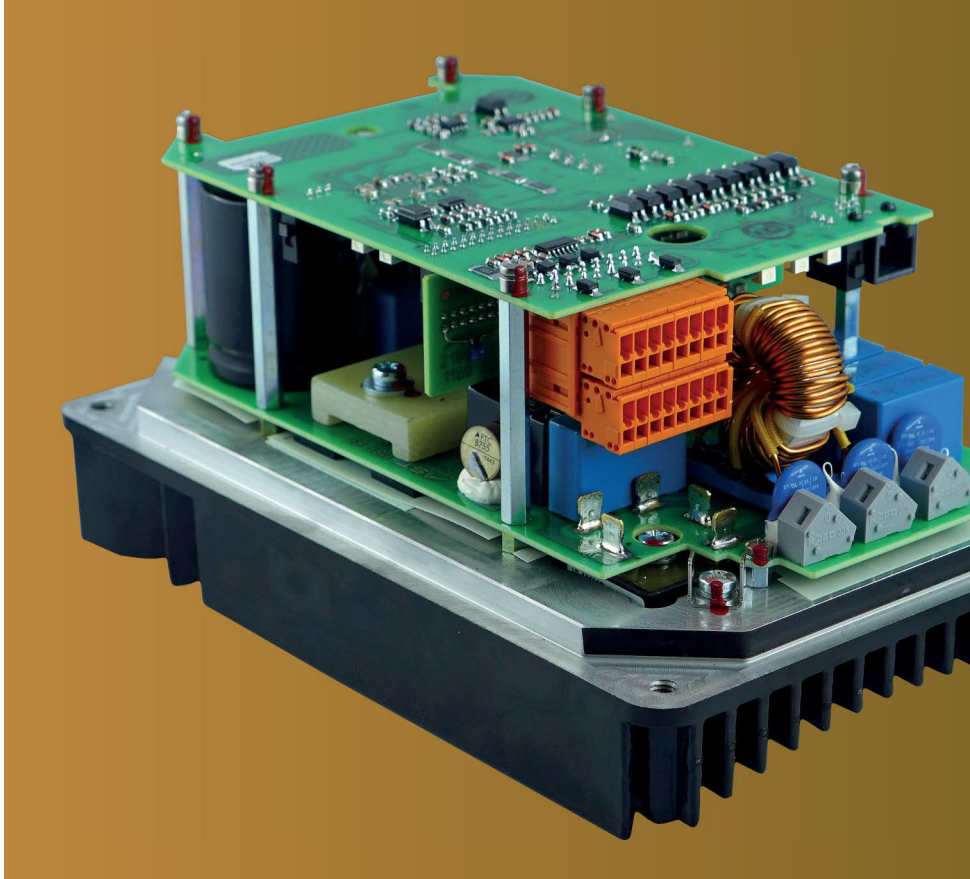




# FREQUENCY INVERTER

*for compact drives*

**AST** Gruppe  
Leistungselektronik

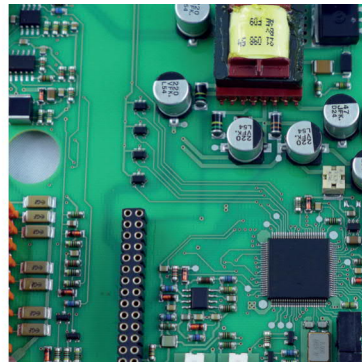


## A.S.T. BENEFITS

**ROBUST DESIGN FOR  
EXTREME AMBIENT  
CONDITIONS**

**INTEGRATED MAINS FILTER**

**DESIGNED IN ACCORDANCE  
WITH EN 50155**



**The frequency inverters are tuned to the three-phase asynchronous motors and, combined with the motor, form an optimised drive system.**

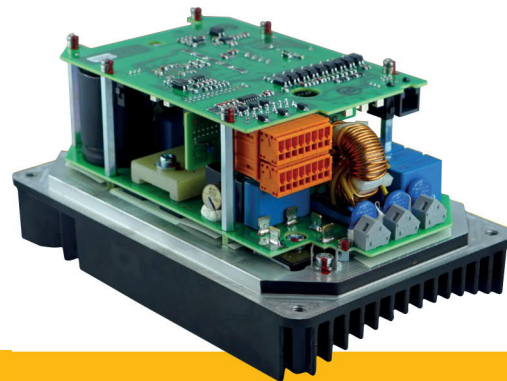
Due to the parameters set in the factory, the compact drives are ready for operation immediately after installation.



**Yes, we do.**

# FREQUENCY INVERTER

for compact drives



## TECHNICAL DATA

Type	Input Voltage	Recommended Motor Shaft Power	Output Power	Output Current
URM 400-005/K	400 V	2,2 kW	3,8 kVA	5,5 A
URM 400-007/K	400 V	3,0 kW	4,8 kVA	7,0 A
URM 400-009/K	400 V	4,0 kW	6,2 kVA	9,0 A
URM 400-012/K	400 v	5,5 kW	8,3 kVA	12 A
URM 400-017/K	400 V	7,5 kW	11,7 kVA	17 A

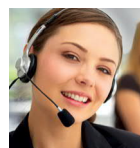
Standards

EN 50155, IEC 61373, EN 50124-1, EN 50121-3-2, EN 45545

We reserve the right to make technical changes.

Datenblatt 0006\_e

09 / 2016



**AST** Gruppe  
Leistungselektronik

**A.S.T. Leistungselektronik GmbH**

Brook-Taylor-Str. 10

D-12489 Berlin

Phone ++49 / 30 / 63925700

Fax ++49 / 30 / 63925709

[www.ast.de](http://www.ast.de)

[info@astle.de](mailto:info@astle.de)